

Wall Lamp

ELX-ZFKT



3.000K 4.000K 5.000K 6.000K

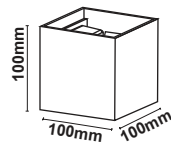
■ Specification

Daya (W)	Input Voltage	Frequency Amp	LED Efikasi	Total Lumen	CRI	Temperatur Warna	Proteksi	Material
3X2W	AC100-240V	50/60Hz	80Lm/W	480Lm	>80Ra <i>optional (>90Ra, >95Ra)</i>	3000K/4000K/6000K	IP65	Cast Aluminium+4.0mm +PC Lens
5X2W	AC100-240V	50/60Hz	80Lm/W	800Lm	>80Ra <i>optional (>90Ra, >95Ra)</i>	3000K/4000K/6000K	IP65	
10X2W	AC100-240V	50/60Hz	80Lm/W	1.600Lm	>80Ra <i>optional (>90Ra, >95Ra)</i>	3000K/4000K/6000K	IP65	

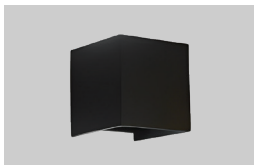
Model : ELX-ZFKT-3WX2



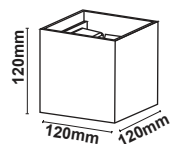
Dimension (mm)



Model : ELX-ZFKT-5WX2



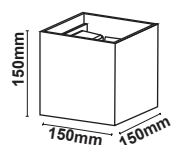
Dimension (mm)



Model : ELX-ZFKT-10WX2



Dimension (mm)



Application



* Easy maintenance

- Modular LED for easy replacement
- Opening and closing possible of LED module part and power supply part
- Customizable beam angle
- Temperature max 50°